



FOUNDATION

helping young people in crisis

Annual Report 2018 – 2019

Safety, hope & opportunity for all young Australians

A photograph of two young men standing on a green grassy field. The man on the left is wearing a dark blue t-shirt and grey pants, holding a soccer ball with both hands. The man on the right is wearing a light grey t-shirt and blue jeans, with his arm around the shoulder of the first man. They are both smiling at the camera. In the background, there are trees and a cloudy sky.

Contents

About us	3
Who we are	4
What we do	5
Our young people	6
Saving lives	8
Triple Care Farm Graduation	9
The programs	10
Our impact	12
Our thanks	14
Our people	16
Finance	18

About us

From the Chair



Each year Sir David Martin Foundation continues to help more young people out of crisis and back to safety, hope and opportunity. 2018 was the first year we could start to fully measure the success of the Withdrawal Program, at David

Martin Place, Triple Care Farm. We had hoped the program would reach more young people who didn't need as much support and would get back into the community quickly. The results have been outstanding with zero suicide attempts and 92% engaged in education and employment.

This success comes from a wonderful team at Triple Care Farm and a strong partnership with Mission Australia whose expertise in service delivery continues to give great outcomes.

In January 2019 we welcomed our new General Manager, Helen Connealy to the Foundation and thanks go to Anna Beaumont for her excellent steering of the team whilst waiting for Helen's appointment.

The Board acknowledges the contribution of General David Hurley, AC, DSC, FTSE as our outgoing patron and we welcome Her Excellency the Honourable Margaret Beazley AO QC, who became the 39th Governor of NSW in May 2019.

My thanks to my fellow Governors of the Board for their commitment and to the wonderful staff at the Foundation for their ongoing, amazing work. Our thanks to you, our supporters, without whom we couldn't continue the important work we do.

In 2020 I look forward to celebrating 30 years of the Foundation and our plans for the future.



Mike Crowley

From the GM



Attending the graduation ceremony in December 2018 was inspirational but also affirming that I was joining the most wonderful cause. Making young people who have felt worthless, feel they have purpose in life is truly joyous.

This family foundation has calmly and respectfully raised over \$65M since Lady Martin founded it in 1990. The values of the family – respect, compassion, generosity, impact and celebration – are truly lived within this charity, both with staff and supporters.

The generosity of our donors and vision of our Bequestors has made a huge impact. With belief in the vision of a withdrawal centre, we have doubled the number of young people getting help since 2017. What a wonderful achievement to celebrate and I am so proud to be part of this focused and kind community.

Our dedicated staff have actively engaged existing and new supporters through a range of city lunches, country lunches at Triple Care Farm and our trademark adventure event, Abseil for Youth.

We continue to work with our partner Mission Australia to plan for the future and work smartly to extend our impact to help more young Australians in crisis. We are collectively ready to use our experience helping young people with drug and alcohol addiction and take on new challenges to address unmet need. Thank you for your support and being on this journey with us.



Helen Connealy

Who we are

Sir David Martin Foundation, a family foundation helping young people in crisis, will be 30 years old in 2020.

Strategy:

To support and build pathways for more best practice models of treatment for Mission Australia Youth drug and alcohol addiction

Vision:

To give safety, hope and opportunity to all vulnerable young Australians

Mission:

Through philanthropy, we help young people in crisis by enabling best practice models of treatment for youth drug and alcohol addiction

Values:

Respect | Compassion | Generosity | Impact | Celebration

Proposed outcomes:

Suicide prevention | Pathways to education and employment

As the major philanthropic partner of Mission Australia, we've raised over \$65M since 1990. This partnership has enabled a best practice model of treatment for young people with drug and alcohol addiction.

The Foundation is the major funder of Mission Australia's Triple Care Farm, a unique, holistic youth treatment centre which each year gives over 200 vulnerable young Australians, aged 16-24, a safe place to get well and prepare for new opportunities.



SIR
david martin
FOUNDATION

MAJOR
PHILANTHROPIC
PARTNER OF

MISSION
AUSTRALIA

What we do



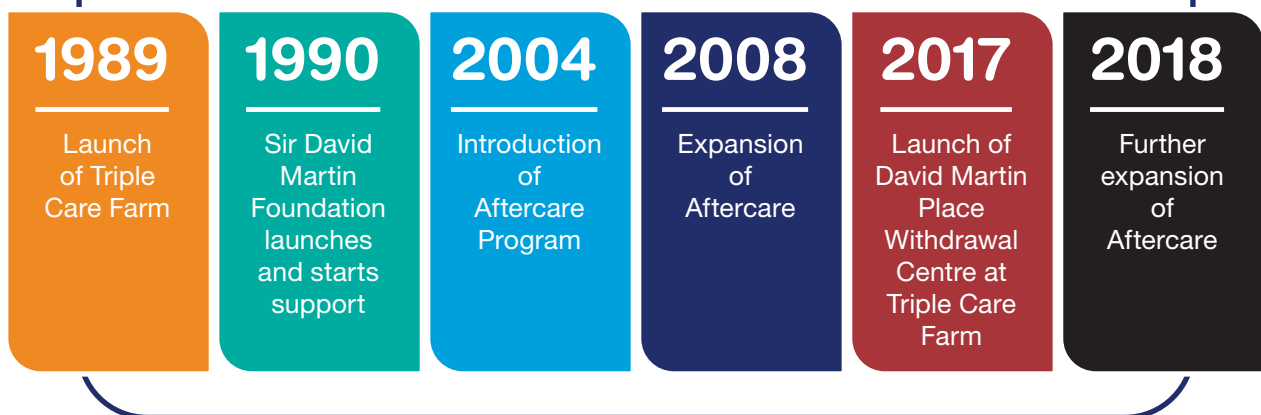
We aim to give vulnerable young people a safe place to get well and prepare for new opportunities. Through Triple Care Farm and the individual's commitment, young people's lives are saved – moving from a high risk of suicide to hope for a brighter future.

Breaking the cycle of addiction

Triple Care Farm is youth-focused and helps young people to make long-term changes in their lives. The challenges of young people seeking support include:

- Drug and alcohol misuse
- Mental illness and risk of suicide
- Homelessness
- Unemployment
- Family breakdown

How the program developed



Our young people



Our young people have overcome great disadvantage before they reach Triple Care Farm. The majority have underlying mental illness and they haven't always had a stable home environment.

They are vulnerable and disconnected. Most use multiple drugs, whatever is available to ease their pain. There are few places that purely focus on youth and their needs, so successful recovery in adult programs is very hard.

The Foundation supports the Triple Care Farm best practice model of treatment across Withdrawal, Residential Rehabilitation and Aftercare.

Demographics of young people at Triple Care Farm

During 2018, the average age of a young person accessing the withdrawal unit was **20.3 years old**, with:

64%

Males

36%

Females

14%

Identified as Aboriginal and/or Torres Strait Islander (ATSI)

3%

Culturally and Linguistically Diverse

Young people on arrival at Triple Care Farm

Young people often have mental health issues on arrival at Triple Care Farm. The Residential Rehabilitation program helps those who have more complex presentations.

Withdrawal presentations

100%

Substance misuse

93%

Poly substance misuse

82%

Mental health issues

58%

Suicidal thoughts

42%

Low-mild withdrawal symptoms

58%

Moderate-severe withdrawal symptoms

36%

Incarceration

Residential Rehabilitation presentations

100%

Substance misuse

96%

Mental health issues

70%

Family breakdown

50%

History of family substance misuse

49%

Suicidal thoughts

45%

Incarceration



Saving lives



Thank you for helping young people like Max

Max survived drug and alcohol addiction, physical injury and multiple suicide attempts throughout his teens. But it was after a head injury left him in a coma that his own need for survival led to a turning point on his personal pathway to help. He describes it as a pivotal point in his life, where he realised that he had been given a second chance. He took himself to the hospital and went to an adult rehabilitation clinic for two months before he found Triple Care Farm.

Here in a place of support and care, Max felt a genuine glimmer of hope. The program is suited to his needs – helping him with both mental health and drug and alcohol issues.

It is incredible to see him back in the community. He has a home, a care program and a future – a life he hadn't imagined when he was sleeping rough in the back of his car.

Triple Care Farm Graduation

The annual Graduation ceremony was held in December 2018 to celebrate those young people who have completed the 2018 residential rehabilitation program. This year they were joined by those who had graduated from the Withdrawal Program at David Martin Place, which opened at Triple Care Farm in August 2017.

Graduates, their families and friends came together for a day of celebration, including receiving a certificate of achievement presented by Lady Martin. **It is often the first time these young people have received any formal acknowledgement and is a joyous and uplifting occasion.**

Supporters of Triple Care Farm also attend to be part of the day and take pride in the successes of these brave young people.



The programs

Best practice model of treatment at Triple Care Farm

The program is accredited by the Australian Council on
Healthcare Standards and features three core components:



Residential Withdrawal

2-4 WEEKS



Residential Rehabilitation

12 WEEKS



Aftercare

6 MONTHS



The programs



Over the last 30 years the Triple Care Farm programs have been refined and improved to ensure the best outcomes for the young people. All programs are voluntary and funded predominantly by philanthropy.



Core elements of Withdrawal

- Medical
- Psychosocial support
- Home care



Core elements of Residential Rehabilitation

- Psychological counselling
- Vocational, education and training
- Creative arts and sports
- Home for now



Core elements of Aftercare

- Personalised support of youth worker
 - Building support networks
 - Finding accommodation
- Pathways to education and/or employment
- Emergency needs (medical, safety etc)

Our impact

Participants in 2018:

118 students

in Withdrawal
(over half moved
into Residential
Rehabilitation)

86 students

in Residential
Rehabilitation

209 students

in Aftercare
(includes 105
who completed
programs in 2017)

Our impact

Impact

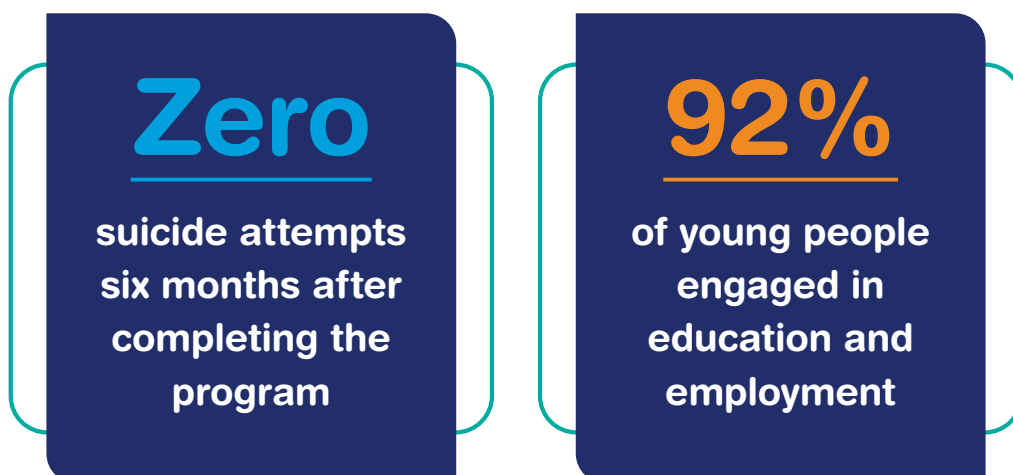
On young people*

- **Lifesaving:** Over 3,000 young people's lives saved with zero suicide attempts
- **Safe housing:** 100% in stable housing
- **Empowered to independence:** 92% engaged in education and employment, and others actively seeking
- **Rebuilt** self-esteem with 80% reduction in chronic drug and alcohol use

On society

- Participation in the programs keep vulnerable young people out of hospital and jail
- Every \$1 donated by our supporters creates \$3 worth of social impact

*Based on Withdrawal Program, six months after graduating



Our thanks

Thank you to all our wonderful supporters whose generosity ensures our work continues to help young people in crisis. Regular donations are so important to us to help us plan and commit to the programs. Every gift is very much appreciated.

Key major donors

The Neilson Foundation
Paul Ramsay Foundation
Maple-Brown Family Foundation

Key partners

Investa
Commonwealth Bank
of Australia (CBA)
Royal Australian Navy
Royal Motor Yacht Club of NSW

Major donors

A N Wales AM & Mrs G Wales
Anna MacIntyre
Anthony Sweetman
ATS Charitable Foundation
City Tattersalls Club
David & Margaret Mullen
David Adams
Doc Ross Foundation
Douglas Scott Foundation
Frank Mitchell
Give2Asia/State Street
Graham and Jan Moore
Henry & Annemarie Pens
Hume Coal
Charitable Foundation
J F Grimsdale

J Gillis Broinowski
James N Kirby Foundation
Jann Skinner
Joan Mackisack
John Almgren AM and
Mrs Yvonne Almgren
Judy MacIntyre
Lenity Australia
Mark Monk
Mundy Family
Charitable Foundation
Murray Freeman
Norman Brunsdon
Patricia Ho
Prescott Family Foundation
Roger Halstead

Ronald Geoffrey
Arnott Foundation
Shah Rusiti
Shaw & Partners
Skipper-Jacobs
Charitable Trust
Stranfield Pty Ltd
The Vernon Foundation
The Karen & John
Kightley Foundation
The Rodwell Foundation
Todd Family Foundation
Tony and Gail Hirst
Warrington Charities Pty Ltd
Woodend Pty Ltd
Woods5 Foundation

Thanks to the kind supporters whose legacy supports our Foundation:

Frank De Angeli | Joyce Tyrer | Ann Plotke | Hilary Cameron | Janette Hamilton
Helen Huggins | Marilyn Watson | Janet Playfair

Our thanks

Our thanks to our pro bono/gift in kind partners

Luminis Partners | Teece Hodgson & Ward
The Honda Foundation | Urban Descent

Philanthropy

As a family foundation we are fortunate to receive generous support from many other families and empathetic philanthropists. We also acknowledge the long-term vision of those kind people who left a legacy in their Will to ensure we continue our work. Thanks to our Board of Governors for introducing new supporters and representing our worthy cause.

Our major event – Abseil for Youth

Sir David Martin Foundation's Abseil for Youth continued to raise much needed funds and raise awareness of our cause. With the support of key partner, Investa, and event partner, Urban Descent, hundreds of participants bravely abseiled from the 33rd floor, down 135 metres of 1 Market Street in mid-October 2018 and successfully got friends and family to support them with donations. A big thank you to everyone!

Our community events

Our partnership with the Royal Australian Navy continues with a wonderful cocktail party on board HMAS Adelaide. In conjunction with the Royal Motor Yacht Club (RMYC) the RAN was raising funds for Sir David Martin Foundation.

Lady Martin Bridge Day brought together friends and supporters to enjoy a fun day of Bridge, raffles, lucky door prizes and lunch at HMAS Penguin Naval Base. The Commanding Officer and personnel of HMAS Penguin generously hosted the special fundraising event for our foundation and two young people from the Triple Care Farm Program bravely shared their stories with the guests.

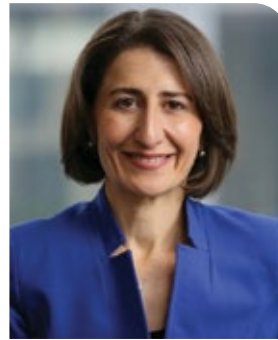
Governance

Sir David Martin Foundation is a foundation run by a small team of staff and overseen by a Board of Governors. The trustee is Mission Australia. We are grateful for the patronage of the Governor of NSW.



Patron

Her Excellency The Honourable
Margaret Beazley AO QC
Governor of NSW



Vice Patron

The Honourable
Gladys Berejiklian MP
Premier of NSW

Board of Governors



Michael Crowley
(Chairman)



Captain William
Martin RAN (Rtd)



Lady Susie Martin
OAM



Rob Woods



Jessica Parker



Shah Rusiti



David Adams



Yvonne Korn



Rear Admiral
Chris Oxenbould
AO RAN (Rtd)



Andrew Sharpe



Danika Houghton



Jason Millett

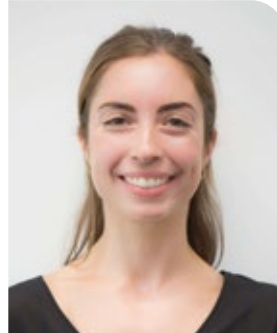
Our team



Anna Beaumont
Philanthropy Manager



Helen Connealy
General Manager



Megan Meyer
Communications Manager



Jenny Leahy
Fundraising Coordinator



Cath Isted
Events and Partnerships
Manager

Finance

	2019		2018	
INCOME				
Fundraising appeals*	\$225,254	5%	\$453,463	10%
Fundraising events	\$343,071	7%	\$385,831	9%
Major Gifts, Trusts & Foundations & Corporates	\$1,841,004	38%	\$1,374,300	31%
Bequest and legacy income	\$1,934,582	40%	\$1,377,795	32%
Community & Regular Giving	\$188,548	4%	\$194,849	4%
Net finance income	\$348,198	7%	\$582,450	13%
Total	\$4,880,657	100%	\$4,368,688	100%
DISTRIBUTION AND EXPENSES				
Program funding	\$3,143,137	64%	\$3,479,609	80%
Provision for future program funding	\$879,790	18%	-\$123,385	-3%
Expenses related to fundraising and administration	\$857,730	18%	\$1,012,464	23%
Total	\$4,880,657	100%	\$4,368,688	100%

*2019 Fundraising appeals decrease is a relocation of donations to major gifts.

EXPENSES RELATED TO FUNDRAISING AND ADMINISTRATION	2019	2018
Personnel	\$452,398	\$452,065
Direct Fundraising, events and marketing	\$274,200	\$388,033
Admin	\$131,132	\$172,366
Total	\$857,730	\$1,012,464

Finance

BALANCE SHEET	2019	2018
Cash and cash equivalents	\$1,039,800	\$732,605
Trade and other receivables*	\$1,701,977	\$1,223,340
Investments	\$5,556,479	\$5,423,617
Other assets	\$0	\$0
Total current assets	\$8,298,256	\$7,379,562
Trade and other receivables**	\$7,280,090	\$7,311,257
Total non current assets	\$7,280,090	\$7,311,257
Total assets	\$15,578,346	\$14,690,819
Liabilities		
Trade and other payables	\$13,407	\$9,307
Employee benefits	\$19,231	\$20,328
Total current liabilities	\$32,638	\$29,635
Employee benefits	\$13,186	\$8,453
Total non-current liabilities	\$13,186	\$8,453
Total liabilities	\$45,824	\$38,088
Net assets	\$15,532,522	\$14,652,731
Equity		
Settled sum	\$10	\$10
Accumulated surplus	\$15,532,512	\$14,652,721
Total equity	\$15,532,522	\$14,652,731

*At call working capital account with Trustee

**Interest in a life bequest and loan account with Trustee

Help us

Donate: martinfoundation.org.au/donate-now/

Leave a bequest: martinfoundation.org.au/donate-now/

Share our story:



Contact us

martinfoundation.org.au

admin@martinfoundation.org.au

(02) 9219 2002



SIR
david martin
FOUNDATION

MAJOR
PHILANTHROPIC
PARTNER OF

MISSION
AUSTRALIA

Acknowledgement of Land: We acknowledge the traditional custodians of the land on which we work, and we pay our respects to the Elders past, present and future.



Sir David Martin Foundation is a registered charity with ACNC

Thanks to Clearly Creative Graphic Design.